



## Quick Installation Guide

**KVM Switching Client Software for Windows**  
**User-definable Hotkeys**  
**Independent/Simultaneous Audio&PC Switching**  
**Autoscan Delay Time Programmable**  
**LKU-UA02**

**2-port USB “KVM-in-the-Cable” w/ Audio&Mic**  
**2 x built-in 1.5 M KVM Audio/Mic Combo Cables**

## Quick Installation Guide

Thank you for purchasing the **LKU-UA02 USB “KVM-in-the-Cable” Switch w/ Audio&Mic Switching!** With our highly reliable and quality product, user can enjoy countless benefits from using it.



LKU-UA02

### Introduction

The **LKU-UA02** is a 2-port **USB “KVM-in-the-Cable”** Switch with audio and microphone switching function. It provides 2 sets of built-in USB KVM combo cables to save you cabling troubles. And its *Audio and Microphone switching* function offers you uninterrupted multimedia experience. It allows you to access, control, boot and reboot multiple USB-enabled *multimedia* computers using only one USB keyboard, mouse, monitor *and a speaker set and microphone*.

For PCs running Windows operating systems, it also provides an innovative and easy-to-use *KVM Switcher Software* -- a small windows client application to facilitate your KVM switching operations such as PC selection and hotkey sequence

programming, autoscanning, autoscan delay time programming, independent/simultaneous audio&PC Switching, etc.

The **LKU-UA02 USB “KVM-in-the-Cable” Switch** offers USB 1.1 interface technology for Plug-and-Play and hot-pluggability. Users can enjoy maximum flexibility and convenience with its compact and one-piece design.

### Out-of-Box Installation

**Take the Companion Diskette/CDROM and the KVM Switch out of the box and follow the steps below for installation....**

**Step 1.** Insert the companion CD ROM into your CD drive, and the installer program, *USBKVMIn.exe*, will be run (or you can find it with the Explorer and double-click its software icon to start installation). Complete the software installation on each of the computers to be connected to the KVM Switch.



After the installation is completed, you will see a KVM Switcher icon on the system tray of your window desktop. Just right click to evoke the operation menu and double-click to evoke configuration box. For operation details of the KVM Switcher software, please refer to the *Operation Quick Reference*.

Applicable model: LKU-UA02



: No live connection detected



: Current active PC channel is on port 1



: Current active PC channel is on port 2



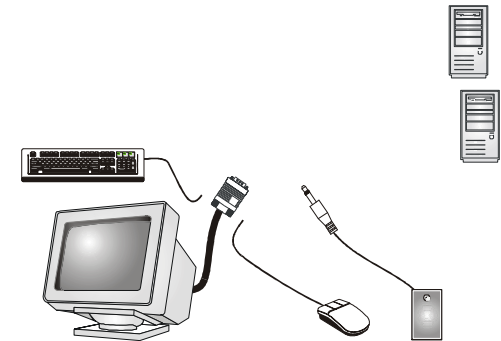
The KVM Switcher Software supports only the Windows platforms. For other platforms such as Linux or MacOS, you can still use the keyboard hotkey - *ScrLk + ScrLk* - to switch PC.

**Step 2.** Connect the shared USB keyboard, mouse, monitor, speaker/headphone and microphone each to its port on your KVM Switch.

**Step 3.** Connect a set of the built-in KVM/Audio&Mic cables to a computer's connectors. Connect another set of cables to another computer. Now you can operate the KVM Switch immediately.

⚡ Some older computers with USB interface might need to manually enable the USB option in the BIOS settings before you can use any USB devices. If your USB interface does not work, please check the USB option status in the BIOS.

⚡ If you use Windows 95/98/SE and has not yet installed a USB mouse on your computer, there might be an error message telling you that mouse is not detected and prompting you to decide whether to ignore the same message in the future, and yet you found there is no mouse movement to disable this message...So it is suggested that you should installed your USB mouse on your computer first, before connected it to this KVM Switch.




Configuration Diagram

# USB “KVM-in-the-Cable” Operation Quick Reference

There are three methods to control your KVM Switch for PC and Audio/Mic channel selection: using (1) the front-panel push button, (2) a hotkey sequence or (3) the KVM Switcher Software.

## Face-panel button

The face-panel button allows you a direct control over KVM switching operation. Simply press the button to switch to the next connected PC and audio/mic channel (if binding is enabled). By default, PC port switching and audio/mic port switching are bound together.

 You can use the front panel button to switch to an empty port that is not connected with any computer. Normally, if you use keyboard hotkeys or the KVM Switcher software, you will not be able to switch to an empty port.


## Keyboard hotkeys

User-definable hotkeys for PC selection:

**Hotkey sequence = Ctrl + Alt + [command key]\***


\* Please refer to next section for keys that are qualified to be used as a command key


Universal hotkey for PC toggle-switching:

 Both the universal hotkey, ScrLk + ScrLk and the user-definable hotkey, Ctrl + Alt + [command key] **WILL NOT** allow you to switch to an empty port that is not connected with any computer. To force your KVM to switch to an empty port, just press the front-panel button to switch.

**Universal Hotkey sequence = ScrLk + ScrLk**

\* For operating systems other than Windows, you can still use this special hotkey to facilitate PC switching.

 Each keystroke within a hotkey sequence should be pressed within 2 seconds. Otherwise, the hotkey sequence will not be validated.

 After perform port switching, you have to wait till the KVM Switch icon shows forth the target port before you can perform next switching again. The KVM Switcher icon could be found on the system tray of your Windows desktop after its installation.

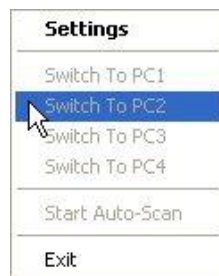
## KVM Switcher Software (only for Windows platform)

In addition to PC switching, the KVM Switcher Software also allows you more advanced functions such as described in the next section....

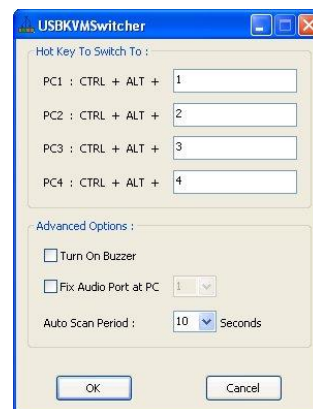
### KVM Switcher Operation Reference

#### Switch to PC x by Operation Menu

Right-click the KVM Switcher icon to evoke the operation menu, then select whichever PC that is available for switching. Once you select a PC channel, it will immediately switch to that PC. Note that the unconnected port(s) or the active port will be grayed-out and non-selectable.



KVM SWITCHER Operation Menu



KVM SWITCHER Configuration Dialog Box

#### Switch to PC x by Keyboard Hotkeys

Hit the hotkey according to your current hotkey definition:

**Hotkey sequence = Ctrl + Alt + [command key]\***

\* The factory default hotkey setting is Ctrl + Alt + 1/2/3/4 for PC 1/2/3/4. You can also use ScrLk + ScrLk to switch PC.

#### Start Auto-scan

Right-click the KVM Switcher icon to evoke the operation menu, then select Start Auto-Scan to activate autoscanning.

#### Stop Auto-scan

(While autoscanning) right-click the KVM Switcher icon to evoke the operation menu, then select Stop Auto-Scan to deactivate autoscanning.

#### KVM Switcher configuration


Right-click the KVM Switcher icon and select Settings or double-click the icon to bring up the configuration dialog box.

#### Define Hotkey commands

You can specify the command key as you like by typing it in. For example, you can specify the hotkey for switching to PC 1 as CTRL + ALT + A by typing an A (not case-sensitive) in the editable field.

**Hotkey Sequence = CTRL + ALT + [command key]\***

\* The command key is user-definable via the configuration dialog box

 Except those control keys such as Alt, Ctrl, Shift, CAPS, Tab, Esc and those functions keys and edit keys, all other keys on the keyboard, including those number keys on the number pad are all qualified to be used a hotkey command key. In addition to the software KVM Switching by the operation menu and the user-defined hotkeys, you can always use the universal hotkey for PC switching – ScrLk + ScrLk

#### Turn On Buzzer (optional feature, not available on LKU-UA02 model)

This is feature is not available on this model. [Check this option to turn on the buzzer sound for port switching/hotkey execution confirmation.]

#### Fix Audio Port at PC x

Check this option and then select the PC to fix the audio/mic channel to the selected PC. Once this option is checked, the audio/mic channel will be fixed and become non-switchable.

#### Auto Scan Period

Select the Autoscan period from 10 ~ 60 seconds with an increment of 5 seconds. The Autoscan period is the time your KVM Switch will wait to switch to next PC.

Technical Support  
E-mail: [btitech@linkskey.com](mailto:btitech@linkskey.com)  
Website: [www.linkskey.com](http://www.linkskey.com)