



**KVM Switching Client Software for Windows**

**User-definable Hotkeys**

**Independent/Simultaneous Audio&PC Switching**

**Autoscan Delay Time Programmable**

**LKU-S02SK / LKU-S02ASK / LKU-S04ASK**

**2/4-port Slim Palmtop USB KVM Switch  
w/ optional Audio&Mic**

**Quick Installation Guide**

Thank you for purchasing the LKU-S02SK / LKU-S02ASK / LKU-S04ASK Slim Palmtop USB KVM Switch w/ Audio & Mic. With our highly reliable and quality product, user can enjoy countless benefits from using it.



LKU-S02SK



LKU-S02ASK (w/ Audio&Mic)



LKU-S04ASK (w/ Audio&Mic)

**Introduction**

The LKU-S02SK / LKU-S02ASK / LKU-S04ASK is a 2/4-port Slim Palmtop USB KVM Switch with optional audio and microphone switching function. It allows you to access, control, boot and reboot multiple USB-enabled computers. The independent audio/mic switching function allows an uninterrupted audio experience on a same connected computer even when you switch to another computer.

For PCs running Windows systems, it provides an innovative and easy-to-use *KVM Switcher Software* -- a small windows client application to facilitate your KVM switching operations such as PC selection and hotkeys sequence programming, autoscanning, autoscan delay time programming, independent / simultaneous audio & PC Switching, etc.

**Out-of-the-box Installation**

**Take the Companion Diskette/CDROM and the KVM Switch out of the box and follow the steps below for installation....** (Skip to step 2 for non-windows based systems.)

**Step 1.** Insert the companion CD-ROM into your CD-ROM drive, and the installer program, *USBKVMIn.exe*, will be run (or you can find it with the Explorer and double-click its software icon to start installation). Complete the software installation on each of the computers to be connected to the KVM Switch.



USBKVMIn.exe



After the installation is completed, you will see a KVM Switcher icon on the system tray of your window desktop. Just right click to evoke the operation menu and double-click to evoke configuration box. For operation details of the KVM Switcher software, please refer to the *Operation Quick Reference*.



: No live connection detected



: Current active PC channel is on port 1



: Current active PC channel is on port 2



The KVM Switcher Software supports only the Windows Operating System on PC platforms. You can also use the keyboard hotkey sequence - *ScrLk + ScrLK* - to switch PC. This hotkey sequence is not available on Mac OS and Linux, however push button is available for all OS platforms.

**Step 2.** Connect the shared USB keyboard, mouse, speaker/headphone and microphone each to its port on your KVM Switch.

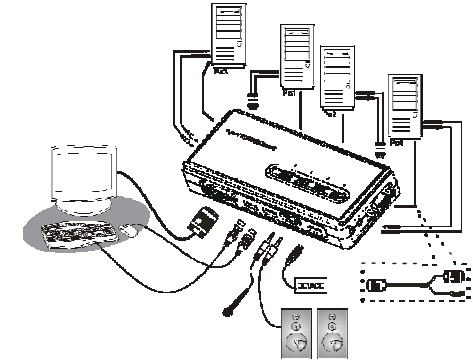
**Step 3.** Connect each KVM PC port to a computer, using the slim KVM combo cable and the audio/mic cable. After you have connected the KVM and computers properly, now you can operate the KVM Switch immediately.



Some older computers with USB interface might need to manually enable the USB option in the BIOS settings before you can use any USB devices. If your USB interface does not work, please check the USB option status in the BIOS. If you use Windows 95/98/SE and has not yet installed a USB



mouse on your computer, there might be an error message telling you that mouse is not detected and prompting you to decide whether to ignore the same message in the future, and yet you found there is no mouse movement to disable this message....So it is suggested that you should installed your USB mouse on your computer first, before connecting it to this KVM Switch.



LKU-S04ASK Configuration Diagram

**Easy Operation**

There are three methods to control your KVM Switch for PC switching: using the face-panel push button, the keyboard hotkey sequence, and the Windows software application.

**Face-panel button**

The face-panel button allows you a direct control over PC port switching. Simply press the button to switch PC port. By default, PC port switching and Audio/Mic port switching are unbound (either will be switched independently).

**Keyboard hotkey**

A keyboard hotkey sequence consists of at least two specific keystrokes:

**Universal hotkey sequence = ScrLK + ScrLk**

**Usage: Hit ScrLK key twice within 2 seconds**

**Hotkey Combination = Ctrl+ Alt + [Command key]**

**Usage: Hold down CTRL and ALT keys and then hit command key**


**Note: The command key is user-definable in the Windows software application only. See Command Key section for details.**

# Slim Palmtop USB KVM Switch - Operation Quick Reference

There are three methods to control your KVM Switch for PC and Audio/Mic channel selection: using the face-panel push button, the keyboard hotkey sequence, and the KVM Switcher Software.

## Face-panel button

The face-panel button allows you a direct control over KVM switching operation. Simply press the button to switch to the corresponding PC port (and audio/mic channel, if binding is enabled). By default, PC port switching and audio/mic port switching are bound together.

 You can use the face-panel button to switch to an empty port that is not connected with any computer. Normally, if you use keyboard hotkey or the KVM Switcher software, you will not be able to switch to an empty port.



## Keyboard hotkey

User-definable hotkey for PC selection:



**Hotkey Combination = Ctrl + Alt + [command key]\***


\* Please refer to Command Key section for keys that are qualified to be used as a command key


Universal hotkey for PC toggle-switching:


  Both the universal hotkey and the user-definable hotkey **WILL NOT** allow you to switch to an empty port that is not connected with any computer. To force your KVM to switch to an empty port, just press the face-panel button to switch.

**Universal Hotkey sequence = ScrLk + ScrLk**

  For Windows systems, you can use this hotkey sequence to facilitate PC switching. This special hotkey sequence is not available for Mac and Linux. However, you can use the face-panel button to do the switching.

 Each keystroke within a hotkey sequence should be pressed within 2 seconds. Otherwise, the hotkey sequence will not be validated.

 After perform port switching, you have to wait till the KVM Switch icon shows forth the target port before you can perform next switching again. The KVM Switcher icon could be found on the system tray of your Windows desktop after its installation.

 All the hotkeys are only functional after the system is booting into the OS. If you want to switch PC in the BIOS POST stage, press the face-panel button to perform switching.

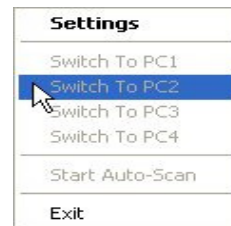
## KVM Switcher Software (only available for Windows platform)

In addition to PC switching, the KVM Switcher Software also allows you more advanced functions such as described in the next section....

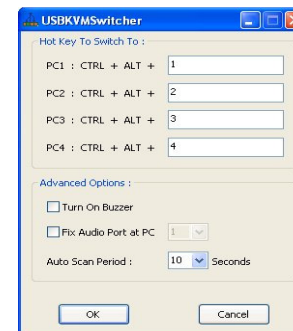
## KVM Switcher Operation Reference

### Switching PC by Operation Menu

Right-click the KVM Switcher icon to evoke the operation menu, then select whichever PC that is available for switching. Once you select a PC channel, it will immediately switch to that PC. Note that the unconnected port(s) or the active port will be grayed-out and non-selectable.



KVM Switcher Operation Menu



KVM Switcher Configuration Dialog Box

### Switching PC by Keyboard Hotkey

Hit the hotkey according to your current hotkey definition:

**Hotkey Combination = Ctrl + Alt + [command key]\***

\* The factory default hotkey setting is Ctrl + Alt + 1/2/3/4 for PC 1/2/3/4. You can also use ScrLk + ScrLk to switch PC.

### Start Auto-Scan

Right-click the KVM Switcher icon to evoke the operation menu, then select Start Auto-Scan to activate autoscanning.

### Stop Auto-Scan

(While autoscanning) Right-click the KVM Switcher icon to evoke the operation menu, then select Stop Auto-Scan to deactivate autoscanning. Or you can press any button on the face-panel to stop Auto-scan.

### KVM Switcher Configuration


Right-click the KVM Switcher icon to evoke the operation menu, then select Settings or just double-click on the KVM Switcher icon to bring up the configuration dialog box.

### Command Key

You can specify the command key as you like by typing it in. For example, you can specify the hotkey for switching to PC 1 as CTRL + ALT + A by typing an A (not case-sensitive) in the editable field.

**Hotkey Combination = CTRL + ALT + [command key]\***

\* The command key is user-definable via the configuration dialog box. Hold down CTRL and ALT keys then hit command key.

 Except those control keys such as Alt, Ctrl, Shift, CAPS, Tab, Esc, functions keys and edit keys, all other keys on the keyboard that including those number keys on the number pad are all qualified to be used as hotkey command key.

### Fix Audio Port at PC

Check this option and then select the PC to fix the audio/mic channel to the selected PC. Once this option is checked, the audio/mic channel will be fixed and become non-switchable.

### Auto Scan Period

Select the Auto Scan Period from 10 ~ 60 seconds with an increment of 5 seconds. The Auto Scan Period is the time KVM Switch will wait to switch to next PC.

Technical Support  
E-mail: [btitech@linkskey.com](mailto:btitech@linkskey.com)  
Website: [www.linkskey.com](http://www.linkskey.com)