



**LKS-SH5P / LKS-SH8P**  
**5 / 8 - Port**  
**Fast Ethernet Switch**

**User Manual**

Rev 1.0

# Contents

<b>1. Introduction</b>	<b>2</b>
<b>1.1 Switch Features</b>	<b>2</b>
<b>1.2 Package Contents</b>	<b>3</b>
<b>1.3 Front, Rear and Side Panel Specifications</b>	<b>3</b>
<b>1.4 LED Indicator Specifications</b>	<b>3</b>
<b>2. Installation</b>	<b>4</b>
<b>2.1 Before Connecting to the Network</b>	<b>4</b>
<b>2.2 Connecting to End Nodes</b>	<b>4</b>
<b>2.3 Connecting to Router or Switch</b>	<b>5</b>
<b>3. Product Specification</b>	<b>6</b>

## 1. Introduction

LKS-SH5P/LKS-SH8P is a 10/100Mbps Fast Ethernet mini desktop switch. It is especially designed for SOHO, student dormitory and small group users. It has 5/8 10/100Mbps Auto-negotiation Ethernet ports and supports auto MDI/MDI-X. The Auto-negotiation on each RJ45 port senses link speed (10/100Mbps) and duplex mode (full/half duplex mode) of its link partner and adjust itself for optimal performance. With support of auto MDI/MDI-X, it eliminates the hassle of choosing the right kind of cable. The LKS-SH5P/LKS-SH8P is easy to install, "Plug and Play" function helps you setup and be connected in no time. Just plug in the power adapter and connect your PC with an Ethernet cable to the switch, and you are ready. LKS-SH5P/ LKS-SH8P is perfect choice for home and small office use.

### 1.1 Switch Features

- Complies with the IEEE802.3 10Base-T Ethernet, IEEE802.3u 100Base-TX Fast Ethernet standards
- Supports NWay auto-negotiation function, Half/Full-duplex auto-detect data transfer rate
- Provides 5/8 10/100Mbps auto-sensing RJ45 ports and supports auto MDI/MDI-X
- Supports IEEE802.3x flow control for Full-duplex, and Backpressure flow control for Half-duplex

- Supports non-blocking line speed forwarding
- Supports store-and-forward switching method

## 1.2 Package Contents

Please check the articles carefully after you open the packing as below:

- ☑ One LKS-SH5P/LKS-SH8P Fast Ethernet Switch
- ☑ One Power Adapter
- ☑ One User Manual

If any of the listed items are missing or damaged, please contact the local reseller from whom you purchased for replacement.

## 1.3 Front, Rear and Side Panel Specifications

The front panel of LKS-SH5P/LKS-SH8P Fast Ethernet Switch includes Link/Act indicators and one Power indicator. Please refer to the detailed description of these indicators in LED Indicator Specifications.

The rear panel of the switch includes 5/8 10/100Mbps RJ45 ports. The side panel of the switch includes one DC power port used for DC power input.

## 1.4 LED Indicator Specifications

The LED indicators of the switch include Power and Link/Act. You can see their operating situation through these LED indicators.

The following chart shows the LED indicators of the switch along with explanation of each indicator.

LED	Color	Status	Description
Power	Green	Solid	This indicates that the switch is power on
	N/A	Off	Please check the DC power adapter to ensure the adapter is installed properly and attached to the switch
Link/Act	Green	Solid	The connection is successfully established with the end node
	Green	Blinking	The port is transmitting or receiving data packets

## 2. Installation

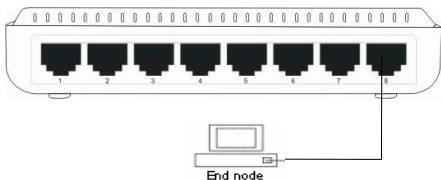
### 2.1 Before Connecting to the Network

Before connecting the LKS-SH5P/LKS-SH8P to the network, please pay attention to the following instructions:

- √ Do not put heavy articles on the switch.
- √ Check the power adapter to confirm the secure connection.
- √ Make sure there is adequate space for proper heat dissipation and adequate ventilation around the switch.

### 2.2 Connecting to End Nodes

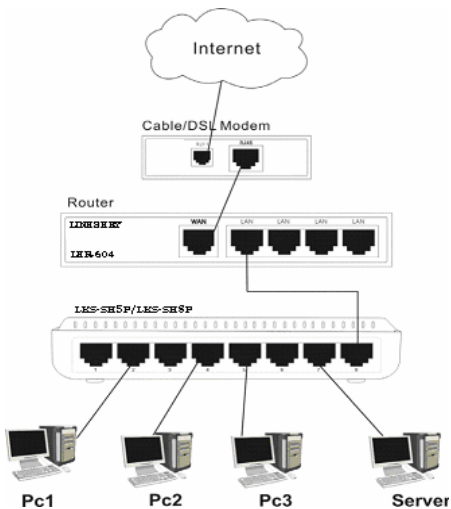
Use standard CAT5 Ethernet cable to connect the switch to end nodes as described below. Switch ports will automatically adjust to the characteristics (cable type, speed, duplex mode) of the device to which is connected.



Connecting to an end node

*Please refer to the LED Indicator Specifications.*

## 2.3 Connecting to Router or Switch



Connecting to router or switch

*Please refer to the LED Indicator Specifications.*

### 3. Product Specification

Standards	IEEE802.3 10Base-T Ethernet IEEE802.3u 100Base-TX Fast Ethernet
Protocol	CSMA/CD
Network Cables	10Base -T: Cat.3 UTP or above 100Base -TX: Cat.5 UTP or above
Speed (Half/Full Duplex)	10/20Mbps, 100/200Mbps
Transmission Method	Fast store-and-forward
MAC Address Table	1K (LKS-SH5P) / 1K (LKS-SH8P)
Packet Filtering/ Forwarding Rate	14880pps (10Mbps) per port
	148800pps (100Mbps) per port
Backplane Bandwidth	1Gbps(LKS-SH5P)/1.6Gbps(LKS-SH8P)
AC Power Supply	AC 100 ~ 240V 50/60Hz
DC Input	DC 9V 600mA
Power Consumption	2.7W (LKS-SH5P) / 4.2W (LKS-SH8P)
Dimension (W x D x H)	5.5 x 3.6 x 1.3 in (140 x 90 x 32 mm)
Operating Temperature	32°F ~ 104°F (0°C ~ 40°C)
Storage Temperature	-40°F ~ 158°F (-40°C ~ 70°C)
Operating Humidity	10% ~ 90% RH (non-condensing)
Storage Humidity	5% ~ 95% RH (non-condensing)
Certifications	FCC Part 15 Class B, CE Mark Class B

## **FCC Statement**

This equipment has been tested and found to comply with the limits for a Class B digital device, pursuant to part 15 of the FCC Rules. These limits are designed to provide reasonable protection against harmful interference in a residential installation. This equipment generates, uses and can radiate radio frequency energy and, if not installed and used in accordance with the instructions, may cause harmful interference to radio communications. However, there is no guarantee that interference will not occur in a particular installation. If this equipment does cause harmful interference to radio or television reception, which can be determined by turning the equipment off and on, the user is encouraged to try to correct the interference by one or more of the following measures:

- Reorient or relocate the receiving antenna.
- Increase the separation between the equipment and receiver.
- Connect the equipment into an outlet on a circuit different from that to which the receiver is connected.
- Consult the dealer or an experienced radio/TV technician for help.





TECHNICAL SUPPORT  
E-mail: [btitech@linkskey.com](mailto:btitech@linkskey.com)  
Website: [www.linkskey.com](http://www.linkskey.com)