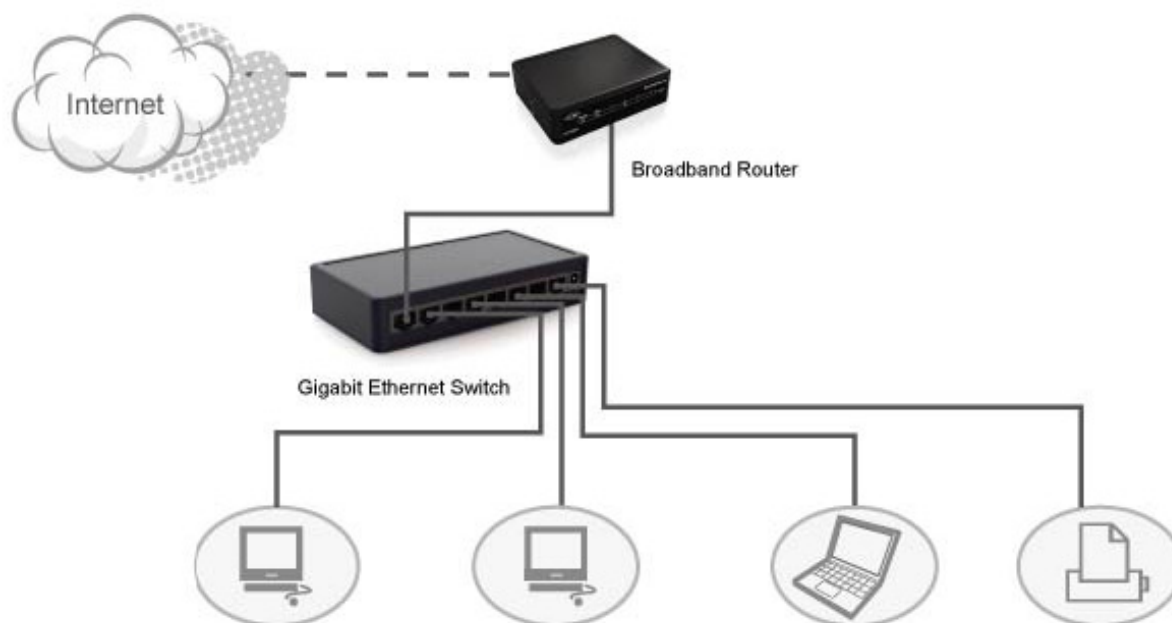




LKS-SG5P / LKS-SG8P
Gigabit Ethernet Switch

A Introduction

LKS-SG5P / LKS-SG8P is 5/8-port 10/100/1000Mbps unmanaged Gigabit Ethernet Switch. The Switch provides 5/8 x 10/100/1000Mbps Auto-Negotiation RJ45 ports. All RJ45 ports support the Auto-MDI/MDI-X function. Every port can work as uplink port or common port. LKS-SG5P / LKS-SG8P provides a cost-effective, high performance, non-disruptive, smooth evolution into gigabit solutions. The Switch delivers superior performance with improving workgroup, network bandwidth, increasing network node, providing greater flexibility, installation convenience. It is the best choice for increasing your speed.



B Features

- Complies with IEEE802.3, IEEE802.3u, and IEEE802.3ab standards
- Supports auto MDI/MDI-X crossover detecting and auto correction
- Supports full and half duplex for 10/100Mbps, and full duplex for 1000Mbps
- Wire-speed packet filtering and forwarding rate
- Store-and-forward architecture filters fragment & CRC error packets
- Supports IEEE802.3az energy efficient Ethernet function



Hardware Installation

Connect the AC Power Adapter to the LKS-SG5P / LKS-SG8P , and then to a power outlet.



Connect an Ethernet network cable from the computer to an available Ethernet port on the LKS-SG5P / LKS-SG8P





LED

Power LED
Green : Power is on
Not illuminated : Power is off



Link/Act LED

Green(Solid) : indicate that the link is established at the port.
Blinking : indicate that there is activity of data occurring at the port.
Not illuminated : indicate that the link is not established at the port.

Technical Specifications

Standards and Protocol	IEEE 802.3, IEEE 802.3u, IEEE 802.3ab, IEEE 802.3az, IEEE 802.3x
Transfer Method	Store and Forward
Number of Ports	5/8 x 10/100/1000Mbps Auto Negotiation ports
Network Media	Ethernet: Cat. 3, 4, 5 up to 100m Fast Ethernet: Cat. 5, 5e up to 100m Gigabit Ethernet: Cat. 5e, 6 up to 100m
MAC Address	LKS-SG5P : 2K LKS-SG8P : 8K
Switching Capacity	LKS-SG5P : 10G LKS-SG8P : 16G
Frame Filtering and Forward Rate	10Mbps : 14880pps 100Mbps : 148800pps 1000Mbps : 1488000pps
LED Indicator	Power : Green Link/Act 10/100/1000Mbps : Green
Dimension (L x W x H)	140(L) X 76(W) X 27.5(H)mm
Environment	Operating Temperature : 0°C ~ 40°C (32°F ~ 104°F) Storage Temperature : -20°C ~ 70°C (-4°F ~ 158°F) Operating Humidity : 10%~90% RH , Non-condensing Storage Humidity : 5%~90% RH, Non-condensing



FCC Warning

This equipment has been tested and found to comply with the regulations for a Class B digital device, pursuant to Part 15 of the FCC Rules. These limits are designed to provide reasonable protection against harmful interference when the equipment is operated in a commercial environment. This equipment generates, uses, and can radiate radio frequency energy and, if not installed and used in accordance with this user's guide, may cause harmful interference to radio communications. Operation of this equipment in a residential area is likely to cause harmful interference, in which case the user will be required to correct the interference at his own expense.

- ✿ Reorient the receiving antenna
- ✿ Increase the separation between the equipment and receiver
- ✿ Connect the equipment into an outlet on a circuit in a different room that to which the receiver is connected
- ✿ Consult the dealer or an experienced radio/TV technician for help.



CE Mark Warning

This is a Class B product. In a domestic environment, this product may cause radio interference, in which case the user may be required to take adequate measures.



Waste electrical and electronic products must not be disposed of with household waste. Please recycle where facilities exist. Check with you Local Authority or Retailer for recycling advice.



TECHNICAL SUPPORT

E-mail: btitech@linkskey.com

Website: www.linkskey.com