



Quick Installation Guide



LDV-342ARC 2-Port HDMI USB Audio&Mic KVM w/ Integrated Cable

Thank you for purchasing the **LDV-342ARC 2-Port HDMI USB Audio & Mic Cable KVM Switch!** With our highly reliable and quality product, you can enjoy countless benefits from using it.

INTRODUCTION

To ensure ultimate video compatibility requirements on recent operating systems, the **LDV-342ARC 2-Port HDMI USB Audio & Mic Cable KVM Switch**, features advanced Active Sync Replication (**A.S.R.**) technology which supports all-time full DDC emulation so that the video compatibility will be as constant and stable as it should be. This all-time full DDC emulation can get rid of those problems that are related to the absence of appropriate DDC data on the KVM switch when port switching is taken place.

Equipped with LDV-342ARC Cable KVM Switch for computers running Windows/Mac operating systems, a KVM Switching Software will facilitate your KVM switching operations such as computer selection, hotkey sequence programming, auto-scanning, auto-scan delay time programming, and independent/simultaneous audio switching, etc.

The LDV-342ARC Cable KVM Switch offers USB 2.0 interface technology for Plug-and-Play. In addition to connect to mouse and keyboard, these two USB 2.0 ports can also be connected to other high-speed USB devices. You can enjoy maximum flexibility and convenience with its compact and one-piece design.

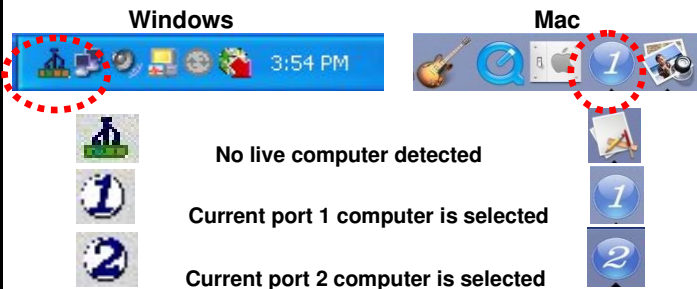
INSTALLATION

Note: The LDV-342ARC Cable KVM Switch does not require any drivers from installation CD-ROM to operate.

1. Use provided installation CD-ROM and follow the steps below for KVM Switching Software installation.
2. Insert the installation CD-ROM into your CD-ROM drive, and the installation menu will appear (or double-click the Autorun.exe on the installation CD-ROM If the Autorun feature has not been enabled on your computer).
3. **For Windows User:** Click on the specific port for Windows Versions to start KVM Switching Software installation. When the installation is finished, right-click on the KVM Switching icon in the system tray of your desktop to evoke the operation menu.
4. **For Mac User:** Click on the specific port for Mac Versions to start KVM Switching Software installation. If it does not start, copy the file (*.pkg) and install from local hard disk. When the installation is finished, double-click on the KVM Switching icon in the dock to evoke the configuration dialog box.

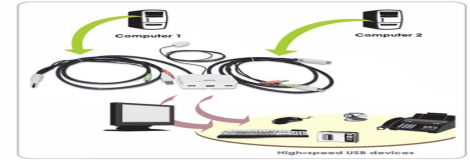


Note: The KVM Switching Software supports Mac OS 10.4 (Tiger) and later. Earlier versions of the Mac OS might not work well.



5. Connect the shared USB keyboard, mouse, HDMI monitor, speaker, and microphone to its relevant console port on the KVM Switch.
6. Connect a set of KVM combo cable to the first computer, and the other set to the second computer.

7. Now you can operate the Cable KVM Switch.
- Note:** If your keyboard and mouse use only one console USB port on the KVM Switch, you can connect any other USB device to the other console USB port on the KVM Switch to share between the connected computers.



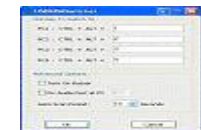
OPERATION

There are three methods to control your Cable KVM Switch.

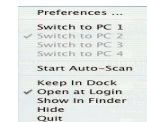
- (1) **QuickSwitch Button (a wired remote control)**
The QuickSwitch button is a wired remote control that allows you a direct switching control. Simply press the button to toggle between the two computers.
- (2) **KVM Switching Software (Windows & Mac platform)**
For more information regarding the KVM Switching Software, please refer to the "Quick Reference Sheet".



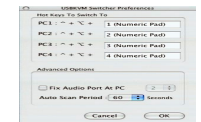
Windows: Operation Menu



Configuration Dialog Box



Mac: Operation Menu



Configuration Dialog Box

- (3) **Keyboard Hotkeys**
For Windows, you can switch computer by using hotkeys "Ctrl + Alt + [command key]" (press three keys simultaneously), which is definable through KVM Switching Software. For operating systems on PC platform such as Windows and Linux, you can also use default hotkeys ScrLk + ScrLk. (Each keystroke within a hotkey sequence should be pressed within two seconds. Otherwise, the hotkey sequence will not be validated.)
For Mac, you can switch Mac by using hotkeys "Command + Option + [command key]" (press three keys simultaneously), which is definable through KVM Switching Software. Please see more details in Quick Reference Sheet.

Quick Reference Sheet				
Command	QuickSwitch Button	Switching Software	Keyboard Hotkeys	Description
Select PC Port	Press the QuickSwitch button to toggle between the connected two computers.	Open the KVM Switching icon in the system tray or dock to evoke the operation menu, then select the computer that you would like to switch to.	Scroll Lock + Scroll Lock ¹	Select PC port
Next lower PC port	Press the QuickSwitch button to toggle the next computer.	Open the KVM Switching icon in the system tray or dock to evoke the operation menu, then select the next computer that you would like to switch to.	Scroll Lock + Scroll Lock ¹	Select next lower PC port
Next higher PC port	Press the QuickSwitch button to toggle the next computer.	Open the KVM Switching icon in the system tray or dock to evoke the operation menu, then select the next computer that you would like to switch to.	Scroll Lock + Scroll Lock ¹	Select next higher PC port
Define Hotkey Preceding Sequence	---	Open the KVM Switching icon in the system tray or dock to evoke the operation menu, then select Settings (Windows)/ Preferences (Mac).	Windows : Ctrl + Alt + “[command key]” (Press three keys simultaneously) Mac : Command + Option + “[command key]” (Press three keys simultaneously)	For PC, instead of default keyboard hotkeys, you may also use user-definable hotkeys for computer selection. For Mac, instead of Scroll Lock key, you may use user-definable hotkeys to switch.
Auto-Scan	---	Open the KVM Switching icon in the system tray or dock to evoke the operation menu, then select Start Auto-Scan to activate auto-scan.	---	Start Auto-scan
Auto-Scan with Programmable Delay Time	---	Open the KVM Switching icon in the system tray or dock to evoke the operation menu, then select a desired Auto-Scan Period in the Settings/Preferences.	---	Auto-Scan Period may select from 10 to 60 seconds with an increment of 5 seconds.
Stop Auto-Scan	---	While in Auto-Scan mode, open the KVM Switching icon in the system tray or dock to evoke the operation menu, then select Stop Auto-Scan to de-activate auto-scan.	---	Stop Auto-Scan
Keep in Dock (Mac only)	---	Open the KVM Switching icon in the dock to evoke the operation menu, then select “Keep In Dock”.	---	KVM Switching icon will appear in the dock of your Mac desktop.
Open at Login (Mac only)	---	Open the KVM Switching icon in the dock to evoke the operation menu, then select “Open at login”.	---	Execute the KVM Switching Software after login
Fix Audio to Port (Analog only)	---	Open the KVM Switching icon in the system tray or dock to evoke the operation menu, then check the box next to the “Fix Audio to Port” and select the desired port in the Settings/Preferences.	---	Check this option then select the computer that you would like to fix the audio/mic port to the selected computer. Once this option is checked, the audio/mic port will become non-switchable. The HDMI audio will always stay with the current working computer.

Notes:

1. Each keystroke within a hotkey sequence should be pressed within two seconds. Otherwise, the hotkey sequence will not be validated.

